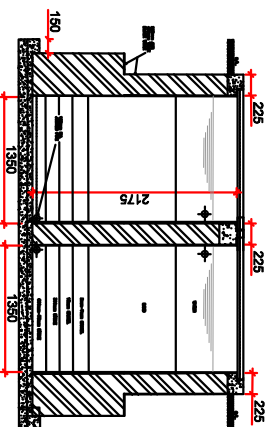
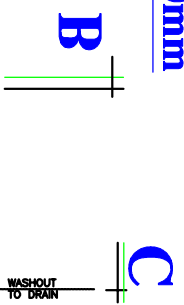


SECTION B-B

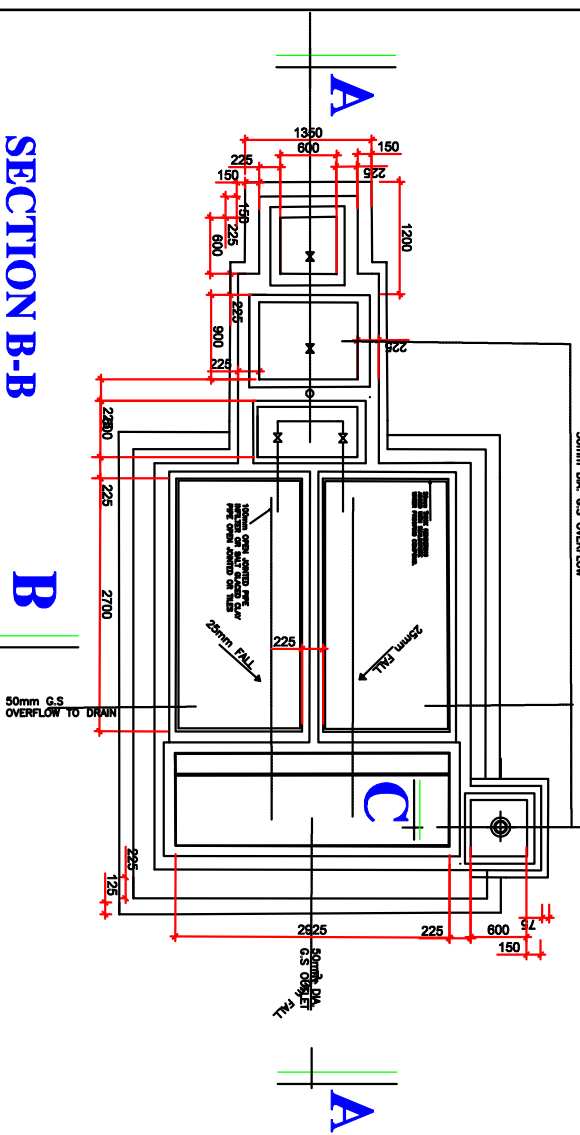
SCALE: 13mm to 300mm



SECTION A-A



SECTION C-C



SECTION B-B

SCALE: 13mm to 300mm

PIPE FITTINGS

1. 50mm DN. HEX. NIPPLE G.S.	3nos
2. 50mm DN. VALVE SCREENED GATE TYPE	1nos
3. 50mm DN. ELBOW G.S.	1nos
4. 50mm DN. FLANG G.S.	1nos
5. 50mm DN. FLANG SOCKET SCREENED	1nos
6. 50mm DN. BALL VALVE FLANGED	1nos
7. 50mm DN. BALL VALVE SCREENED	1nos
8. 50mm DN. EQUAL TEE G.S.	2nos

BILL OF QUANTITY

1. CLEANING OF SITE	42.84 SQUARE METRE
2. EXCAVATION FOR FOUNDATION	26.11 CUBIC METRE
3. CONC. (1:2:4) FOR FLOOR WITH B.R.C No.10	62.72 CUBIC METRE
4. CONC. (1:2:4) FOR COPINGS	1.53 CUBIC METRE
5. CONC. (1:3:6) FOR COPINGS	62.88 SQUARE METRE
6. RENDERING WATER PROOF COUPOUND	10.03 SQUARE METRE
7. SCREEDING THE FLOOR W.K. 1:4 C. 100mm	18nos
8. C/W LITING HANDLES	10nos
9. ALLOW FOR LOCKING DEVICES	5.72 CUBIC METRE
10. FILTER MATERIALS AS FOLLOWS:-	1.13
(a) SAND	1.13
(b) 15mm GRAVEL	1.13
(c) 25mm GRAVEL	1.13
(d) 50mm-75mm STONE	1.13

NOTE:
 1. The details of the drawing is copy right and remain the property of MINISTRY OF WATER TANZANIA.
 2. All works to be carried out in strict accordance with the design and specifications provided in the Operation and Maintenance manual of Ministry of Water and other guidelines as provided by the Ministry of Water.
 3. All relevant details, levels, dimensions must be checked on site before commencement of work, and any discrepancy to be reported to the Engineer's office immediately.

UNITED REPUBLIC OF TANZANIA
MINISTRY OF WATER

P.O.Box 456, DODOMA
 Email: pa@mail.go.tz

DRAWING DESCRIPTION:
 DRAWING NAME: SLOW SAND FILTER CAPACITY 22.5m³/day
 SCALE: 14.03.2020
 DRAWING NO: T/T/A/54
 REVISION NO: 00